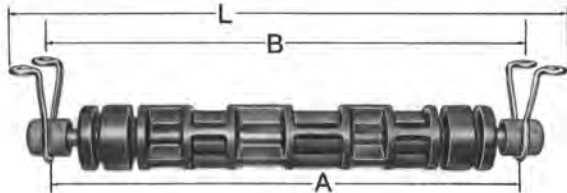
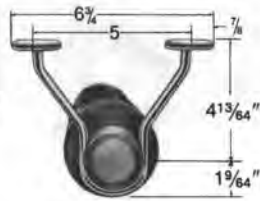


LIMBEROLLER RETURN BRACKETS

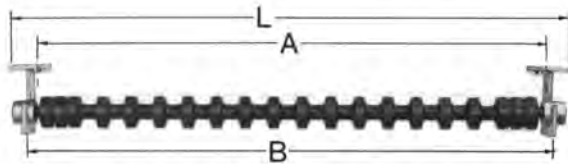
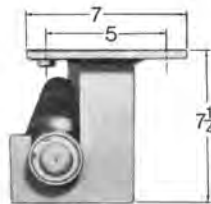
HANGER BRACKETS for LR-106 and LR-107 Series



Dimensions In Inches				
Belt Width	STANDARD DUTY RETURN HANGER BRACKETS*			
	Part No.	A	B	L
18	1500409	24 ¹⁵ / ₁₆	27	28 ⁷ / ₁₆
20	1500409	26 ³ / ₁₆	29	30 ¹ / ₁₆
24	1500409	30 ¹⁵ / ₁₆	33	34 ¹ / ₁₆
26	1500409	32 ¹ / ₁₆	35	36 ¹ / ₁₆
30	1500409	36 ¹ / ₁₆	39	40 ¹ / ₁₆
36	1500409	42 ¹ / ₁₆	45	46 ¹ / ₁₆
42	1500409	48 ¹ / ₁₆	51	52 ¹ / ₁₆
48	1500409	54 ¹ / ₁₆	57	58 ¹ / ₁₆

*Two (2) required per idler. Weight: 4 oz ea.

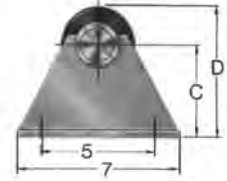
HANGER BRACKETS for LR-307



RETURN HANGER BRACKET**				
Belt Width	Part No.	Dimensions In Inches		
		A	B	L
42	3500164	51	48 ¹ / ₁₆	52 ¹ / ₂
48	3500164	57	54 ¹ / ₁₆	58 ¹ / ₂
54	3500164	63	60 ¹ / ₁₆	64 ¹ / ₂
60	3500164	69	66 ¹ / ₁₆	70 ¹ / ₂

**Two (2) required per idler.

TOP MOUNT BRACKETS for LR-106 and LR-107 Series



Dimensions In Inches						
Belt Width	TOP MOUNT BRACKETS*					
	Part No.	A	B	C	D	L
18	378725	24 ¹ / ₁₆	27	4	5 ¹ / ₄	28 ¹ / ₁₆
18	378725-1	24 ¹ / ₁₆	27	5	6 ¹ / ₄	28 ¹ / ₁₆
18	378725-2	24 ¹ / ₁₆	27	8 ¹ / ₄	10	28 ¹ / ₁₆
20	378725	26 ¹ / ₁₆	29	4	5 ¹ / ₄	30 ¹ / ₁₆
20	378725-1	26 ¹ / ₁₆	29	5	6 ¹ / ₄	30 ¹ / ₁₆
20	378725-2	26 ¹ / ₁₆	29	8 ¹ / ₄	10	30 ¹ / ₁₆
24	378725	30 ¹ / ₁₆	33	4	5 ¹ / ₄	34 ¹ / ₁₆
24	378725-1	30 ¹ / ₁₆	33	5	6 ¹ / ₄	34 ¹ / ₁₆
24	378725-2	30 ¹ / ₁₆	33	8 ¹ / ₄	10	34 ¹ / ₁₆
26	378725	32 ¹ / ₁₆	35	4	5 ¹ / ₄	36 ¹ / ₁₆
26	378725-1	32 ¹ / ₁₆	35	5	6 ¹ / ₄	36 ¹ / ₁₆
26	378725-2	32 ¹ / ₁₆	35	8 ¹ / ₄	10	36 ¹ / ₁₆
30	378725	36 ¹ / ₁₆	39	4	5 ¹ / ₄	40 ¹ / ₁₆
30	378725-1	36 ¹ / ₁₆	39	5	6 ¹ / ₄	40 ¹ / ₁₆
30	378725-2	36 ¹ / ₁₆	39	8 ¹ / ₄	10	40 ¹ / ₁₆
36	378725	42 ¹ / ₁₆	45	4	5 ¹ / ₄	46 ¹ / ₁₆
36	378725-1	42 ¹ / ₁₆	45	5	6 ¹ / ₄	46 ¹ / ₁₆
36	378725-2	42 ¹ / ₁₆	45	8 ¹ / ₄	10	46 ¹ / ₁₆
42	378725	48 ¹ / ₁₆	51	4	5 ¹ / ₄	52 ¹ / ₁₆
42	378725-1	48 ¹ / ₁₆	51	5	6 ¹ / ₄	52 ¹ / ₁₆
42	378725-2	48 ¹ / ₁₆	51	8 ¹ / ₄	10	52 ¹ / ₁₆
48	378725	54 ¹ / ₁₆	57	4	5 ¹ / ₄	58 ¹ / ₁₆
48	378725-1	54 ¹ / ₁₆	57	5	6 ¹ / ₄	58 ¹ / ₁₆
48	378725-2	54 ¹ / ₁₆	57	8 ¹ / ₄	10	58 ¹ / ₁₆

*Two (2) required per idler.

TRAINING BRACKETS

Training brackets are available for both troughing and return idlers. Refer to the factory for details